



airCube™

airMAX® Home Wi-Fi Access Point with PoE In/Out

Models: ACB-AC, ACB-ISP

PoE Passthrough for Powering a 24V CPE Device

Managed by UNMS™, Ubiquiti Network Management System

UNMS App for Fast Setup from a Mobile Device



Introduction

Ubiquiti Networks introduces the airCube™, a cost-effective wireless access point for use in your customer deployments.

Wireless Performance

Two models are available:

- **airCube AC** Dual-band, 802.11ac, 2x2 MIMO technology for maximum wireless performance:
 - **2.4 GHz radio band** Speeds of up to 300 Mbps
 - **5 GHz radio band** Speeds of up to 866.7 Mbps
- **airCube ISP** 802.11n, 2x2 MIMO Wi-Fi for speeds of up to 300 Mbps in the 2.4 GHz radio band

Versatile Power Options

Both models offer convenient PoE passthrough to power a 24V airMAX CPE device, so you can use a single PoE adapter to power both devices.

To provide sufficient power for PoE passthrough:

- The airCube AC requires the included power adapter or 24V, 1A PoE input.
- The airCube ISP requires 24V, 1A PoE input or a 2A Micro USB adapter (not included).

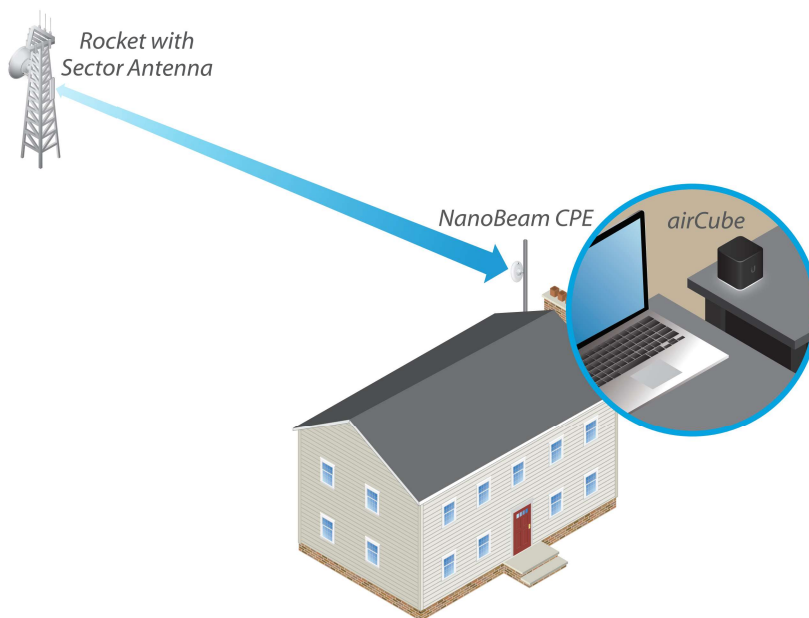
Intuitive Software

Management options feature a graphical user interface designed for streamlined setup and control.

Available options include:

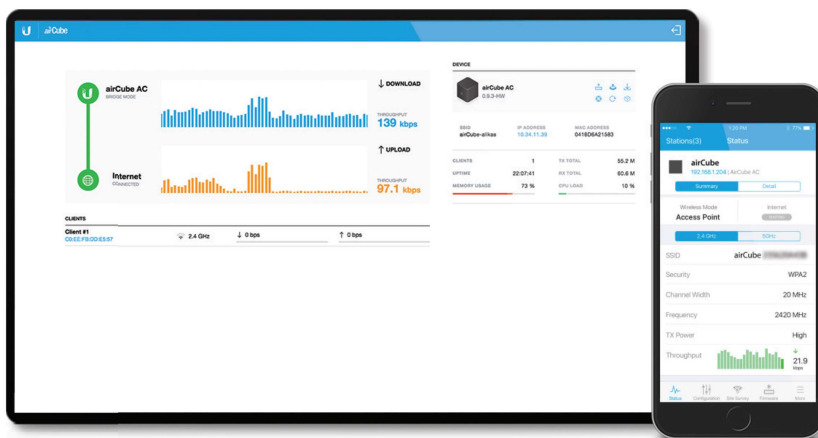
- **UNMS** Provides advanced remote control of Ubiquiti® devices. Use the UNMS™ app to manage your devices using a tablet or smartphone.
- **Web UI** Enables a standalone utility for basic configuration.

Example of a Typical Deployment



Point-to-MultiPoint (PtMP) link: The airCube powers a NanoBeam® 5AC Gen 2 CPE, which connects to a Rocket® Prism® 5AC Gen 2 on an airMAX ac Sector Antenna.

Management Screens



Models

airCube™ AC

Model: airCube-AC

- (4) Gigabit Ethernet Ports
- 24V PoE Passthrough for airMAX CPE
- Dual-Band, 802.11ac, 2x2 MIMO Technology
- Up to 300 Mbps in the 2.4 GHz Radio Band
- Up to 866.7 Mbps in the 5 GHz Radio Band
- Powered by 24V Passive PoE or Included Power Adapter



airCube™ ISP

Model: airCube-ISP

- (4) 10/100 Fast Ethernet Ports
- 24V PoE Passthrough for airMAX CPE
- 802.11n, 2x2 MIMO Technology
- Up to 300 Mbps in the 2.4 GHz Radio Band
- Powered by 24V Passive PoE or 2A Micro USB Adapter (Not Included)



Model Comparison Chart

| Model | Ports | Radio Bands | Wi-Fi | Power Input | PoE Passthrough | Powers airMAX Device |
|-------------|-------------|---------------|----------------------|-------------------|-----------------|----------------------|
| airCube-AC | (4) Gigabit | 2.4 and 5 GHz | 802.11ac 2x2 MIMO | 24V, 1A PoE | ✓ | ✓ |
| | | | | Power Adapter | ✓ | ✓ |
| airCube-ISP | (4) 10/100 | 2.4 GHz | 802.11n 2x2 MIMO | 24V, 1A PoE | ✓ | ✓ |
| | | | | Micro USB Adapter | | |

Specifications

| airCube-AC | | |
|---------------------------|---|------------|
| Dimensions | 87.80 x 89.50 x 89.25 mm (3.46 x 3.52 x 3.51") | |
| Weight | 280 g (9.88 oz) | |
| Power Supply | 24VDC | |
| Power Method | 24VDC, 0.83A or PoE 24V In on LAN Port 1 | |
| Supported Power Voltage | 22-26V | |
| Max. Power Consumption | 8.5W | |
| PoE Out | Controllable 24V PoE Out (+4, 5; -7, 8) on WAN Port | |
| Management Interface | Wi-Fi / Ethernet | |
| Networking Interface | (4) Gigabit Ethernet Ports | |
| LED | Status | |
| Max. TX Power | 22 dBm | |
| Antenna Gain | 2.4 GHz | 5 GHz |
| | 4 dBi | 5 dBi |
| Max. Speeds | 2.4 GHz | 5 GHz |
| | 300 Mbps | 866.7 Mbps |
| Enclosure Characteristics | Black Plastic | |
| ESD/EMP Protection | ±24 kV Contact / Air | |
| Operating Temperature | -10 to 50° C (-14 to 122° F) | |
| Operating Humidity | 5 to 95% Noncondensing | |
| Certifications | CE, FCC, IC | |



Specifications

| airCube-ISP | |
|---------------------------|--|
| Dimensions | 87.80 x 89.50 x 89.25 mm (3.46 x 3.52 x 3.51") |
| Weight | 215 g (7.58 oz) |
| Power Supply | 5V |
| Power Method | PoE 24V In on LAN Port 1 or 2A Micro USB Adapter (Not Included) |
| Supported Power Voltage | 4.95-5.05V |
| Max. Power Consumption | 5W |
| PoE Out | Controllable 24V PoE Out (+4, 5; -7, 8) on WAN Port |
| Management Interface | Wi-Fi / Ethernet |
| Networking Interface | (4) 10/100 Fast Ethernet Ports |
| LED | Status |
| Max. TX Power | 22 dBm |
| Antenna Gain | 4 dBi |
| Max. Speeds | 300 Mbps |
| Enclosure Characteristics | Black Plastic |
| ESD/EMP Protection | ±24 kV RJ-45 Interface |
| Operating Temperature | -10 to 50° C (-14 to 122° F) |
| Operating Humidity | 5 to 95% Noncondensing |
| Certifications | CE, FCC, IC |

